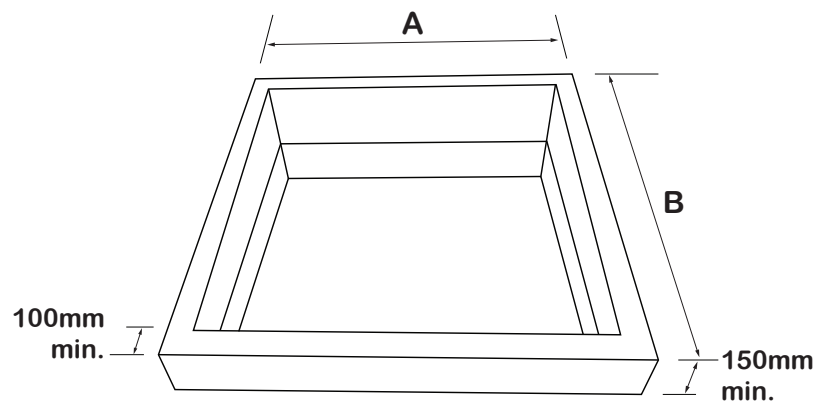
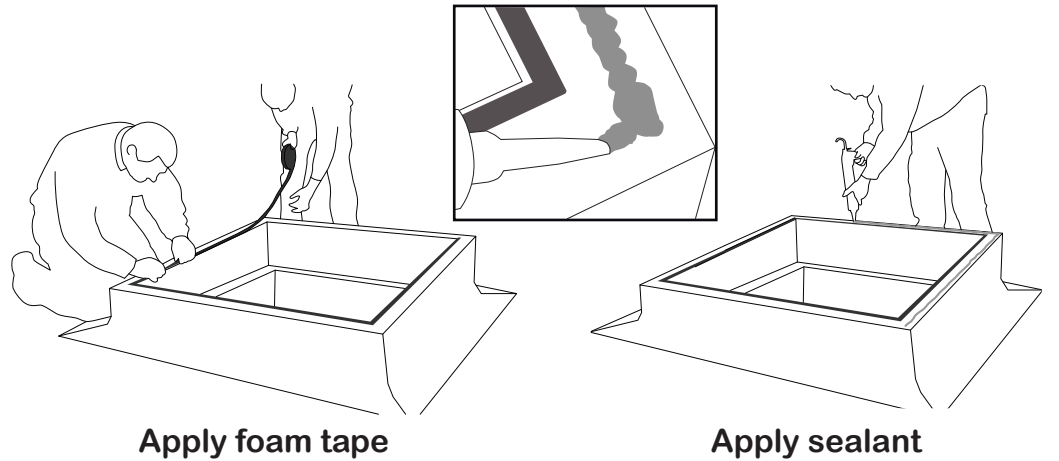


## 1 Check upstand dimensions



Skylight frame may be fitted before or after any roofing felt.

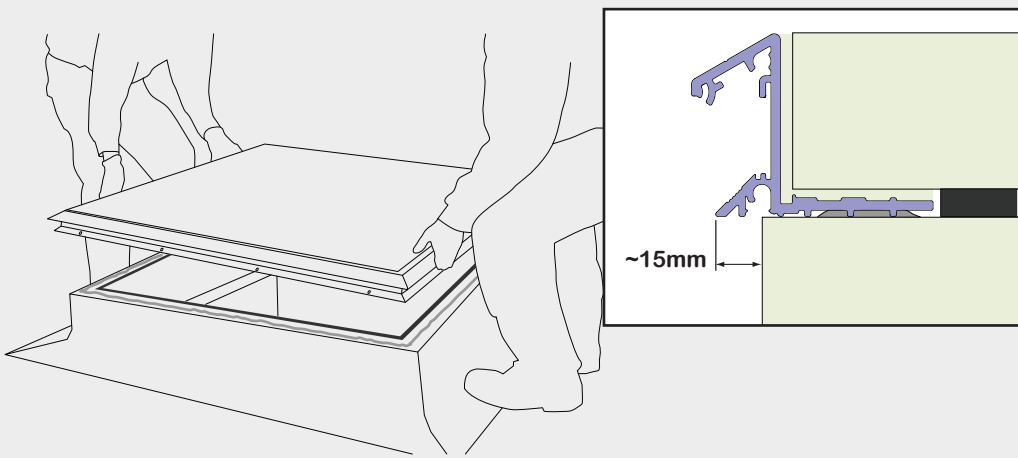
## 2 Prepare upstand surface



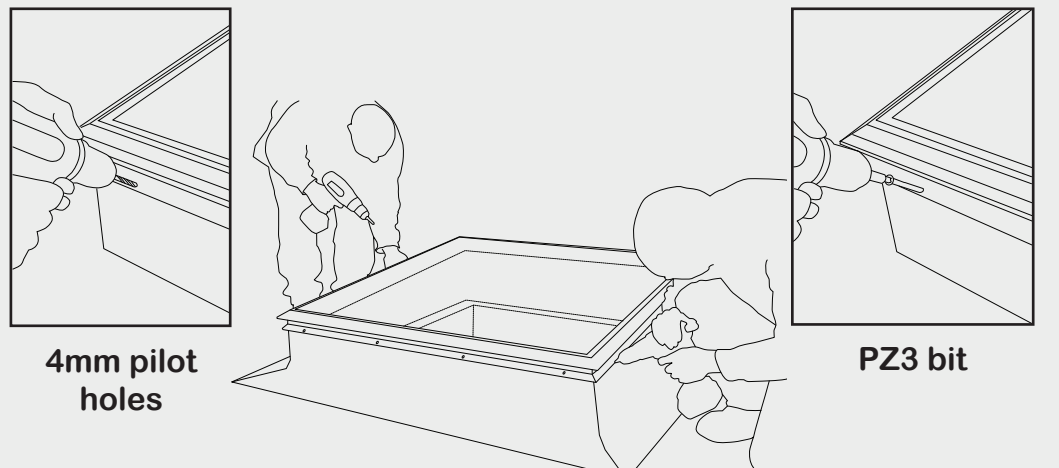
Apply foam tape

Apply sealant

## 3 Place skylight onto upstand



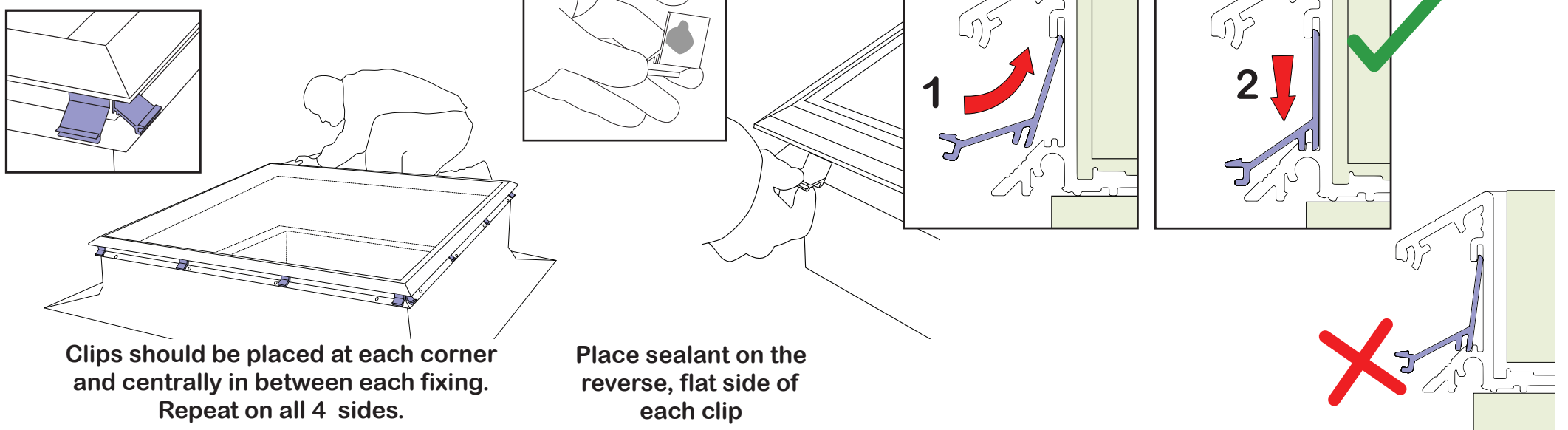
## 4 Fix skylight to upstand



4mm pilot holes

PZ3 bit

## 5 Place clips and seal in place

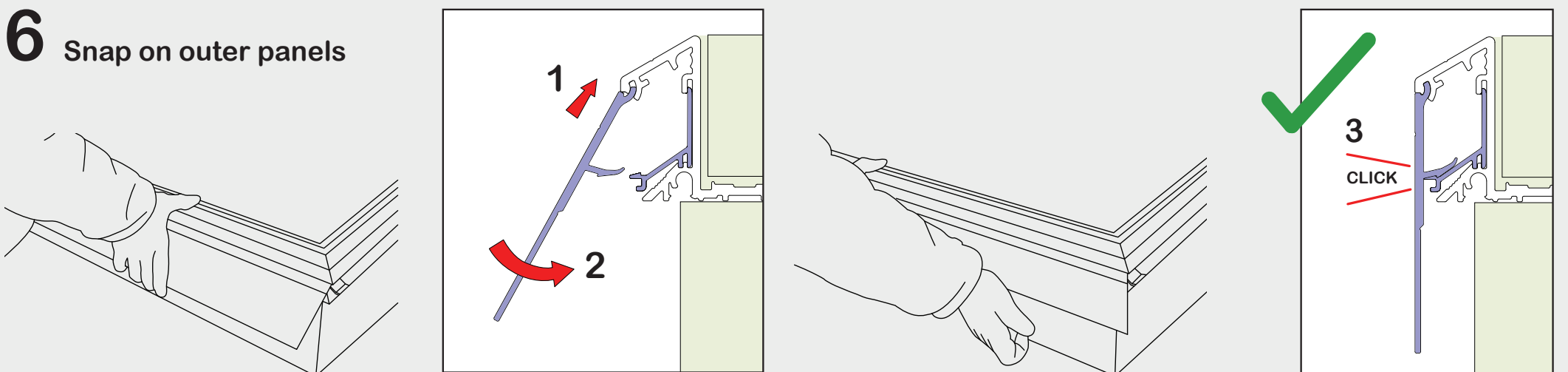


Clips should be placed at each corner and centrally in between each fixing. Repeat on all 4 sides.

Place sealant on the reverse, flat side of each clip

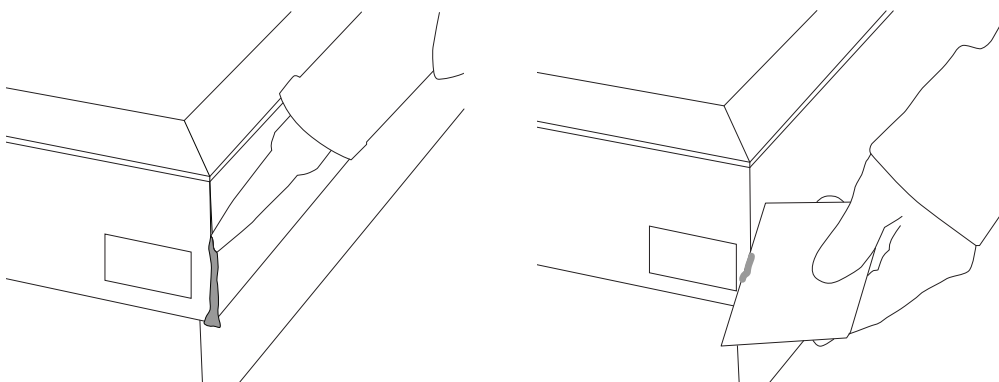
The remaining steps should only be carried out after roofing felt has been fitted to the upstand:

## 6 Snap on outer panels



## 7 Apply sealant at corners.

Remove excess sealant using sealant tool.

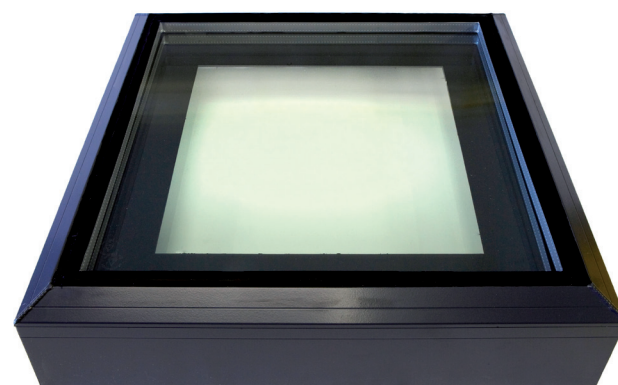


For product support, contact  
Skylight International on 0141 445 6655  
or visit [www.skylight.co.uk](http://www.skylight.co.uk)



Skylight International,  
75 Birkmyre Road,  
Govan, Glasgow,  
G51 3JH

## Glazelite Fitter's Installation Guide



### Kit Contents

- 1 x glazed skylight frame
- 4 x outer panels
- x clips
- 1 x roll of foam tape
- 1 x tube of sealant
- x fixing screws
- 1 x sealant tool
- 1 x removal tool
- 1 x long PZ3 screwdriver bit
- 1 x pilot hole drill bit
- 1 x 3 part X-section sample